

Hot Water Piping

Case History CCH3004

Application:
Replacing leaking ductile iron pipe.

- 160°F Water w/ anti-corrosion chemicals
- 60PSI normal operating service
- 75PSI relief valve setting
- 150PSI Hydrotest



The success of this project led to a second project at the River Road WWTP in December of 2009 using approximately 200' of 3", 4" and 6" RB-1520 in the same service.

Location: Hollywood Road Wastewater Treatment Plant
Hot Water Line Replacement
Amarillo, Texas

Product(s): 1260' of 6"Ø RB-1520 epoxy pipe with fittings, pre-fabricated into shippable sub-assemblies. Installed in August 2009. Above ground and buried supply and return lines.

This system uses waste heat from the blower building to produce hot water which is then sent over 600' to spiral heaters that heat plant sludge so that it flows to the thickener. The water circulates continuously and RB-1520 was chosen for its corrosion resistance and reliability.

Features & Benefits: Frontier Plastic Fabricators provided shop pre-fabrication services and Cortrol coordinated materials, drawings, fabrication and field training for the contractor's personnel.

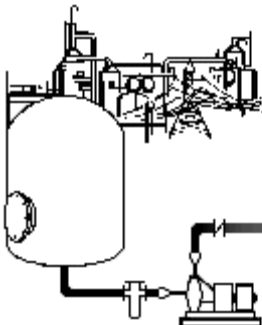
Quality Service Value

Why consider fiberglass?

- As much as 1/10th the weight of comparable metal systems can result in lower cost in structures and supports for pipe, valves, and accessories.
- Non-sacrificial corrosion liner means no scaling, rust, or reduction in wall thickness compared to metal, resulting in less flow loss and longer service life.
- Smoother internal surface combined with larger pipe ID potentially means less pump or blower horsepower and therefore less power consumed to operate over the life of the system.
- Span capabilities can exceed those of metal and thermoplastics.
- End loads due to thermal expansion and contraction are as much as 1/25th that of metal.
- Fiberglass pipe's very low modulus relative to steel results in significantly improved ability to handle expansion and contraction loads.
- Little to no maintenance required to maintain the system under normal operating conditions.
- Options available at the manufacturing stage for fire resistance, reduced smoke generation, and abrasion resistance.
- Wide range of resins and corrosion barriers allow for the use of fiberglass in many different service conditions and pressure ratings.
- Easily engineered for both above ground and below ground applications.
- Installation time of fiberglass can be as much as 35% of stainless steel for significant cost savings.
- Variety of finish colors available.

We can provide you products and services that fit your needs and requirements and meet National Standards:

- NBS
- USDA / FDA
- NFP
- ASME / RTP-1
- SMACNA
- ANSI
- ASTM
- BOCA
- NSF



Control Process Systems, Inc. ~ (800) 652-6789 ~ Fax (918) 446-8812
www.cortrol.com