

Chemical Process Piping System

Case History CCH4001



- Application:** Sodium chloride, magnesium chloride, calcium chloride.
- Location:** El Dorado, Arkansas
- Product(s):** Pre-fabricated fiberglass pipe and fittings, valves, gaskets, supports, and scrubber vessels.
- Scope:** Provide drawings, materials, pre-fabrication, and supply of over 4200' of pipe, 2200 shop joints, and over 700 finished 2"-24" spools.
- Special Conditions:** Cortrol's ability to schedule full load deliveries of pre-fabricated spools enabled continuous installation of pipe sections.
- Features & Benefits:** Able to handle a wide pH range, corrosion resistant products from Cortrol are a great choice for process and process waste lines. Light weight combined with ease of installation, pre-fabrication ability, and project management expertise can result in a significant reduction in installed and operating cost.

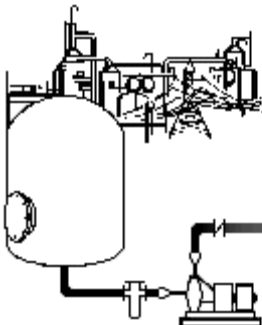
Quality Service Value

Why consider fiberglass?

- As much as 1/10th the weight of comparable metal systems can result in lower cost in structures and supports for pipe, valves, and accessories.
- Non-sacrificial corrosion liner means no scaling, rust, or reduction in wall thickness compared to metal, resulting in less flow loss and longer service life.
- Smoother internal surface combined with larger pipe ID potentially means less pump or blower horsepower and therefore less power consumed to operate over the life of the system.
- Span capabilities can exceed those of metal and thermoplastics.
- End loads due to thermal expansion and contraction are as much as 1/25th that of metal.
- Fiberglass pipe's very low modulus relative to steel results in significantly improved ability to handle expansion and contraction loads.
- Little to no maintenance required to maintain the system under normal operating conditions.
- Options available at the manufacturing stage for fire resistance, reduced smoke generation, and abrasion resistance.
- Wide range of resins and corrosion barriers allow for the use of fiberglass in many different service conditions and pressure ratings.
- Easily engineered for both above ground and below ground applications.
- Installation time of fiberglass can be as much as 35% of stainless steel for significant cost savings.
- Variety of finish colors available.

We can provide you products and services that fit your needs and requirements and meet National Standards:

- NBS
- USDA / FDA
- NFP
- ASME / RTP-1
- SMACNA
- ANSI
- ASTM
- BOCA
- NSF



Control Process Systems, Inc. ~ (800) 652-6789 ~ Fax (918) 446-8812
www.cortrol.com