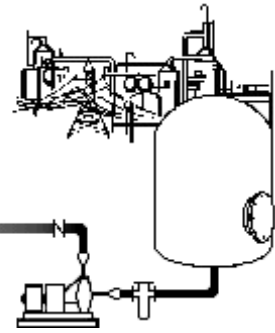


# **CORTROL** Process Systems, Inc.



*Providing Corrosion Control with Non-Metallics Since 1979*



## **Industrial Wastewater Piping**

*Case History CCH4006*



Application: Clarifier industrial wastewater piping.

Location: San Antonio, Texas, J.K. Spruce Unit 2  
Additional 750 megawatts of base load coal-fired generation.

Product(s): CL-1520 Pipe and Fittings

Features & Benefits: Combined wastewater streams from ash tanks, boiler sumps, cooling tower blowdowns, seal/cooling water, and various plant drains require constantly changing pH adjustment depending on wastewater influent composition. The ability of CL-1520 pipe and fittings to transport and feed process chemicals, including FeSO<sub>4</sub>, NaOH, and Polymer, coupled with light weights compared to traditional materials, made it the right choice for this application.

**Cortrol Process Systems, Inc. ~ P.O. Box 9666 ~ Tulsa, OK 74107 ~ (800) 652-6789 ~ Fax (918) 446-8812**  
**[www.cortrol.com](http://www.cortrol.com)**

***Quality Service Value***

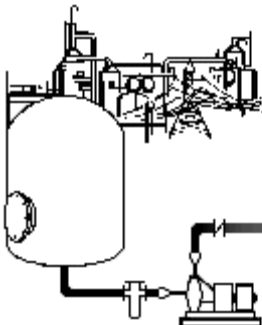
## Quality Service Value

Why consider fiberglass?

- As much as 1/10<sup>th</sup> the weight of comparable metal systems can result in lower cost in structures and supports for pipe, valves, and accessories.
- Non-sacrificial corrosion liner means no scaling, rust, or reduction in wall thickness compared to metal, resulting in less flow loss and longer service life.
- Smoother internal surface combined with larger pipe ID potentially means less pump or blower horsepower and therefore less power consumed to operate over the life of the system.
- Span capabilities can exceed those of metal and thermoplastics.
- End loads due to thermal expansion and contraction are as much as 1/25<sup>th</sup> that of metal.
- Fiberglass pipe's very low modulus relative to steel results in significantly improved ability to handle expansion and contraction loads.
- Little to no maintenance required to maintain the system under normal operating conditions.
- Options available at the manufacturing stage for fire resistance, reduced smoke generation, and abrasion resistance.
- Wide range of resins and corrosion barriers allow for the use of fiberglass in many different service conditions and pressure ratings.
- Easily engineered for both above ground and below ground applications.
- Installation time of fiberglass can be as much as 35% of stainless steel for significant cost savings.
- Variety of finish colors available.

We can provide you products and services that fit your needs and requirements and meet National Standards:

- NBS
- USDA / FDA
- NFP
- ASME / RTP-1
- SMACNA
- ANSI
- ASTM
- BOCA
- NSF



**Control Process Systems, Inc. ~ (800) 652-6789 ~ Fax (918) 446-8812**  
***www.cortrol.com***