

## Cooling Tower Water Supply & Return Piping

*Case History CCH4007*



- Application: Cooling tower water recirculation lines.
- Location: Sedgwick County INTRUST Bank Arena  
Downtown Wichita, Kansas
- Product(s): 800 ft of 4"-20" Red Thread II
- Scope: Supply water to cooling tower and return water to sump pump(s) feeding multiple condenser units.
- Special Conditions: Overcoming the typical reaction to "just use metal" with sound Engineering, features, benefits, and Cortrol's expert project management personnel resulted in an installation that will provide excellent, reliable service for many years to come.
- Features & Benefits: Long-term flow characteristics of fiberglass do not degrade over time, require less pump horsepower, reduce insulation requirements, and may allow downsizing of the line size. Compared to steel, FRP is lighter weight and is easier to install in difficult locations, resulting in a lower overall installed cost and operating savings over the life of the system.

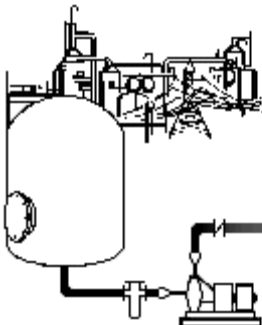
## Quality Service Value

Why consider fiberglass?

- As much as 1/10<sup>th</sup> the weight of comparable metal systems can result in lower cost in structures and supports for pipe, valves, and accessories.
- Non-sacrificial corrosion liner means no scaling, rust, or reduction in wall thickness compared to metal, resulting in less flow loss and longer service life.
- Smoother internal surface combined with larger pipe ID potentially means less pump or blower horsepower and therefore less power consumed to operate over the life of the system.
- Span capabilities can exceed those of metal and thermoplastics.
- End loads due to thermal expansion and contraction are as much as 1/25<sup>th</sup> that of metal.
- Fiberglass pipe's very low modulus relative to steel results in significantly improved ability to handle expansion and contraction loads.
- Little to no maintenance required to maintain the system under normal operating conditions.
- Options available at the manufacturing stage for fire resistance, reduced smoke generation, and abrasion resistance.
- Wide range of resins and corrosion barriers allow for the use of fiberglass in many different service conditions and pressure ratings.
- Easily engineered for both above ground and below ground applications.
- Installation time of fiberglass can be as much as 35% of stainless steel for significant cost savings.
- Variety of finish colors available.

We can provide you products and services that fit your needs and requirements and meet National Standards:

- NBS
- USDA / FDA
- NFP
- ASME / RTP-1
- SMACNA
- ANSI
- ASTM
- BOCA
- NSF



**Control Process Systems, Inc. ~ (800) 652-6789 ~ Fax (918) 446-8812**  
***www.cortrol.com***