

FRP Duplex Strainer

Case History 7002



Application: Wastewater, 200° F, 100 PSI

Location: Puerto Rico

Product(s): Prefabricated pipe and fittings, FRP butterfly valves, 316SS baskets

Special Conditions: This 6"Ø strainer is configured based on the simplex type with angled baskets, allowing for inlet and outlet elevations to remain the same. Each basket housing contains a strainer basket, in this case 316SS with 1/16"Ø perforations, and a seating adjustment bolt. Each housing has a quick-access clamp top with a sealing o-ring. Fittings, valves, drain taps, and support legs complete the package.

Features & Benefits: With the manufacturer's technical assistance, the customer specified epoxy and high-temperature vinyl ester construction combination based on liquid service stream contents. The ability to divert the flow from one side to the other when basket cleaning is needed was critical to this customer's application.

All strainer housings are hydrostatically tested to 1.5 times design pressure to ensure long service life.

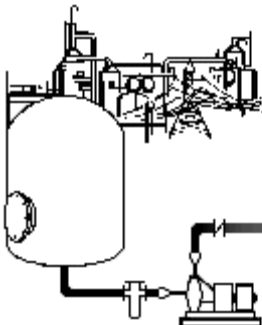
Quality Service Value

Why consider fiberglass?

- As much as 1/10th the weight of comparable metal systems can result in lower cost in structures and supports for pipe, valves, and accessories.
- Non-sacrificial corrosion liner means no scaling, rust, or reduction in wall thickness compared to metal, resulting in less flow loss and longer service life.
- Smoother internal surface combined with larger pipe ID potentially means less pump or blower horsepower and therefore less power consumed to operate over the life of the system.
- Span capabilities can exceed those of metal and thermoplastics.
- End loads due to thermal expansion and contraction are as much as 1/25th that of metal.
- Fiberglass pipe's very low modulus relative to steel results in significantly improved ability to handle expansion and contraction loads.
- Little to no maintenance required to maintain the system under normal operating conditions.
- Options available at the manufacturing stage for fire resistance, reduced smoke generation, and abrasion resistance.
- Wide range of resins and corrosion barriers allow for the use of fiberglass in many different service conditions and pressure ratings.
- Easily engineered for both above ground and below ground applications.
- Installation time of fiberglass can be as much as 35% of stainless steel for significant cost savings.
- Variety of finish colors available.

We can provide you products and services that fit your needs and requirements and meet National Standards:

- NBS
- USDA / FDA
- NFP
- ASME / RTP-1
- SMACNA
- ANSI
- ASTM
- BOCA
- NSF



Control Process Systems, Inc. ~ (800) 652-6789 ~ Fax (918) 446-8812
www.cortrol.com